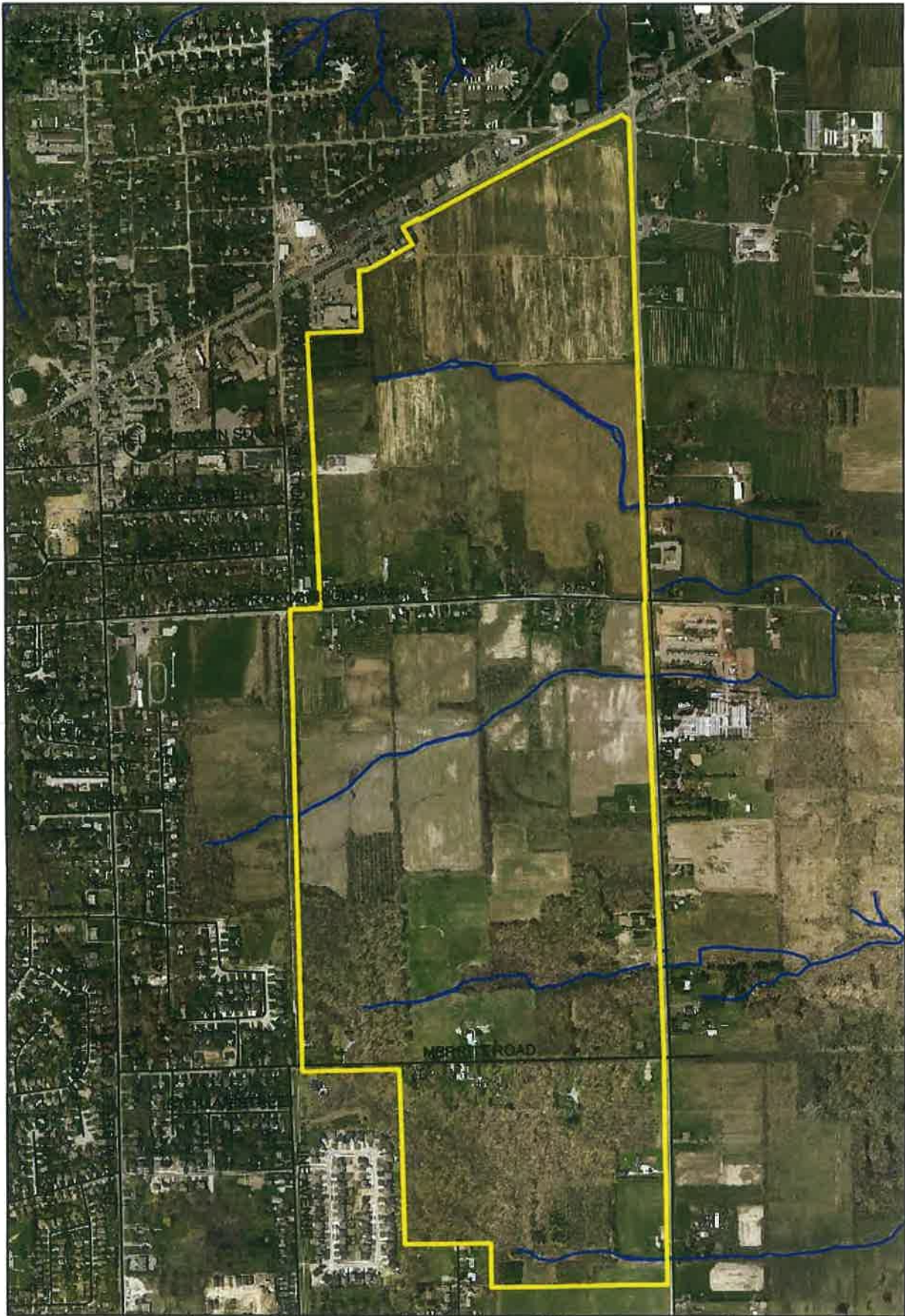


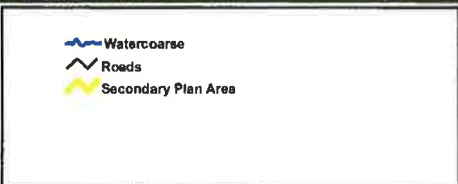


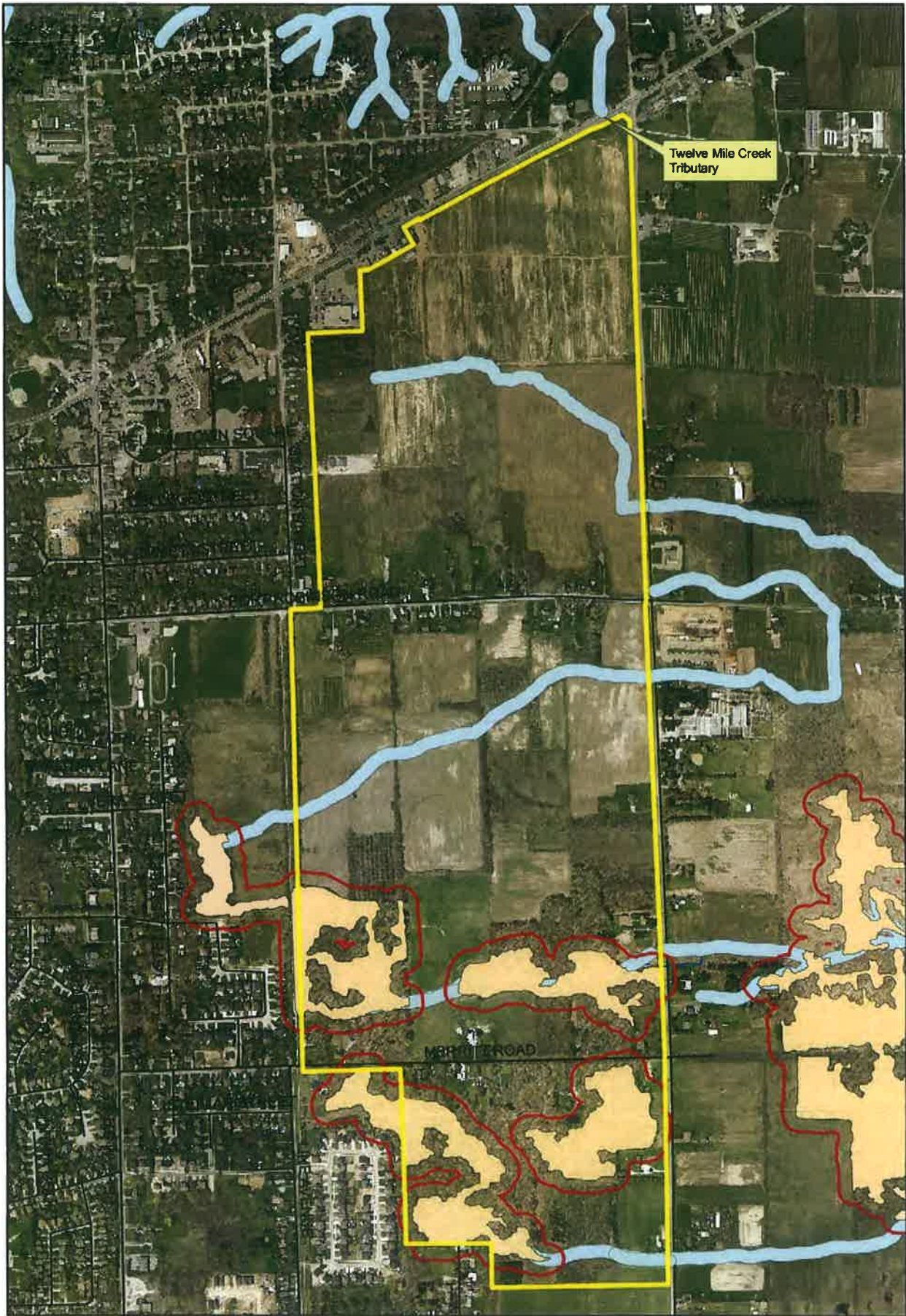
APPENDIX C
EAST FONTHILL
SECONDARY PLAN AREA

NATURAL HERITAGE
FEATURES MAPPING



East Fonthill
 Secondary Plan Area
 Existing Tributaries
 of Singer's Drain
 Map 1





Twelve Mile Creek
Tributary

MORNING ROAD

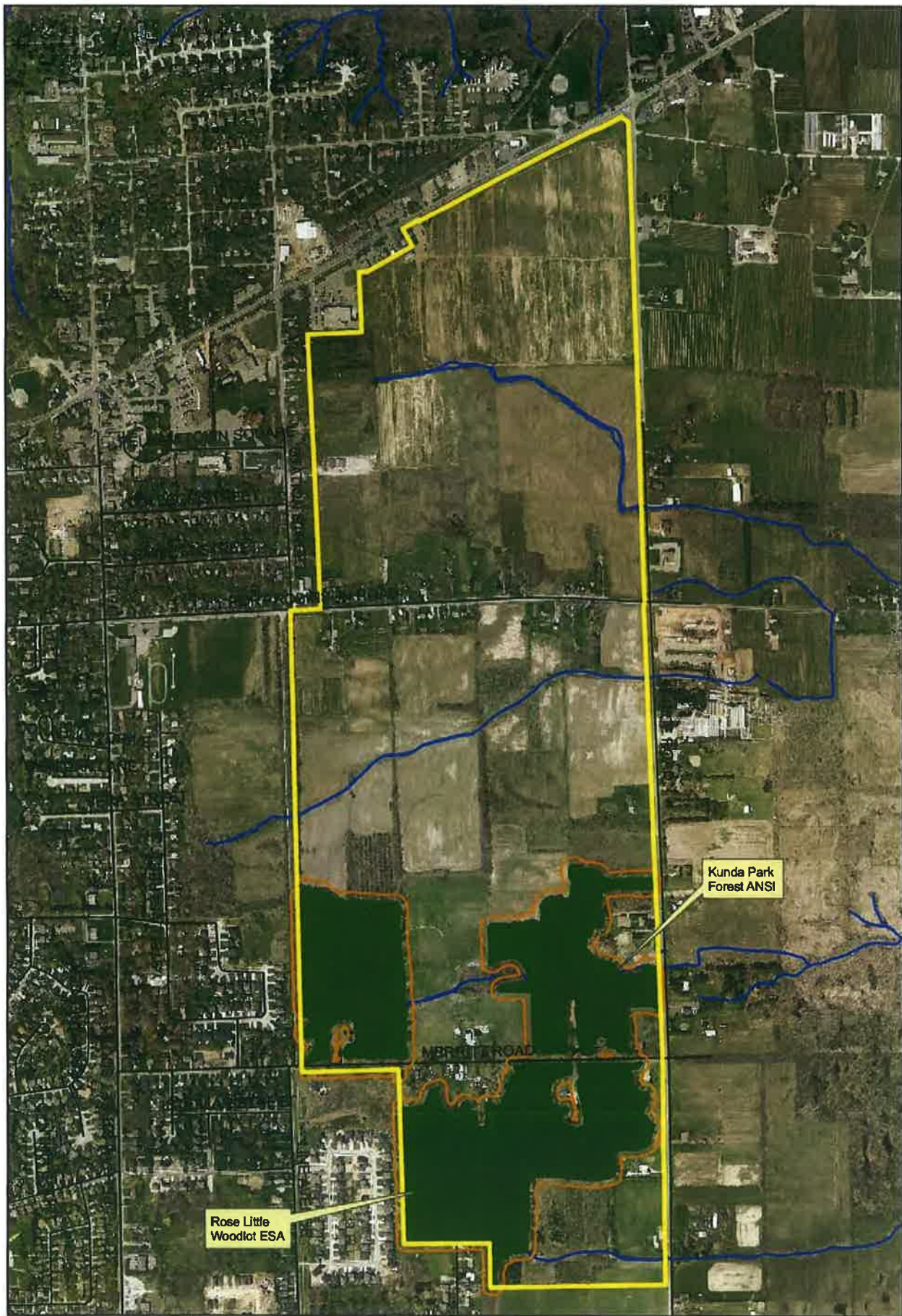
East Fonthill
Secondary Plan Area
Watercourses and
Wetlands
Map 2



- PSW 30 m Buffer
- Watercourse 15 m Buffer
- Niagara Cataract PSW (MNR Draft)
- Watercourse
- Roads
- Study Area

LCA
Environmental
Consultants

100-100 Main Street East, Suite 204
Oshawa, Ontario
L1H 5P1




East Fonthill
Secondary Plan Area
Regionally Significant
Woodlands

Map 3

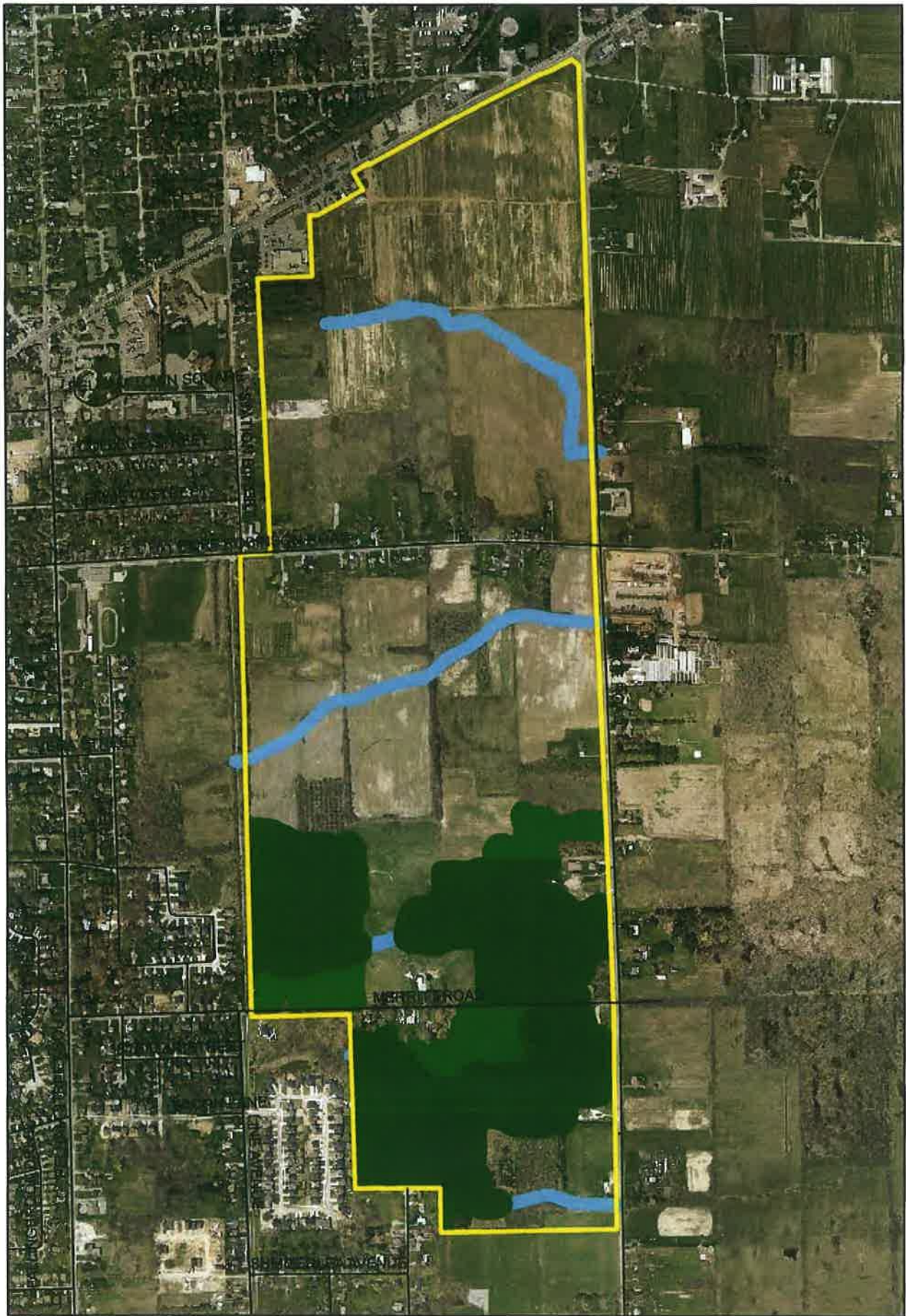


-  Woodlands 15 m Buffer
-  Regionally Significant Woodlands
-  Watercourse
-  Roads
-  Study Area



LCA
Environmental
Consultants

104-160 Main Street, Unit 208, 7th Floor
Scarborough, Ontario
M1V 4S7



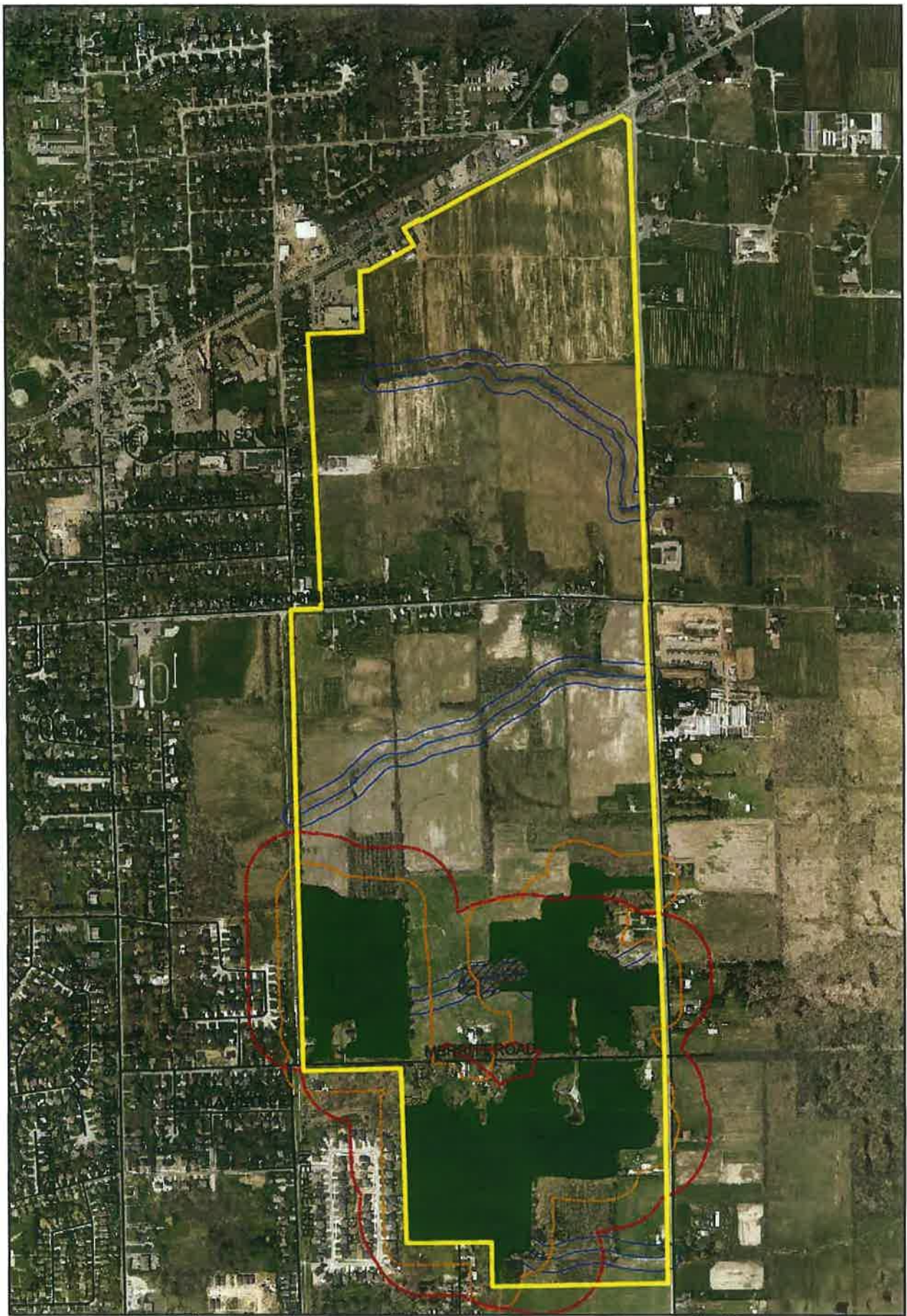
East Fonthill
 Secondary Plan Area
 Environmental
 Constraints
 Map 4

1:8,000

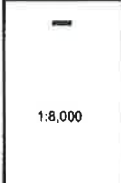
	Level One		Watercourse
	Level Two		Roads
	Secondary Plan Area		

LCA
 Environmental
 Consultants

126 - 18 Main Street East, 94th St
 Orillia, Ontario
 L3M 1P2



East Fonthill
Secondary Plan Area
Core Natural
Heritage Component
Adjacent Lands
Map 5



- PSW 120 m EIS Trigger
- Woodlands 50 m EIS Trigger
- Watercourse 30 m EIS Trigger
- Niagara Cataract PSW (Draft)
- Regionally Significant Woodlands
- Watercourse
- Roads
- Secondary Plan Area

