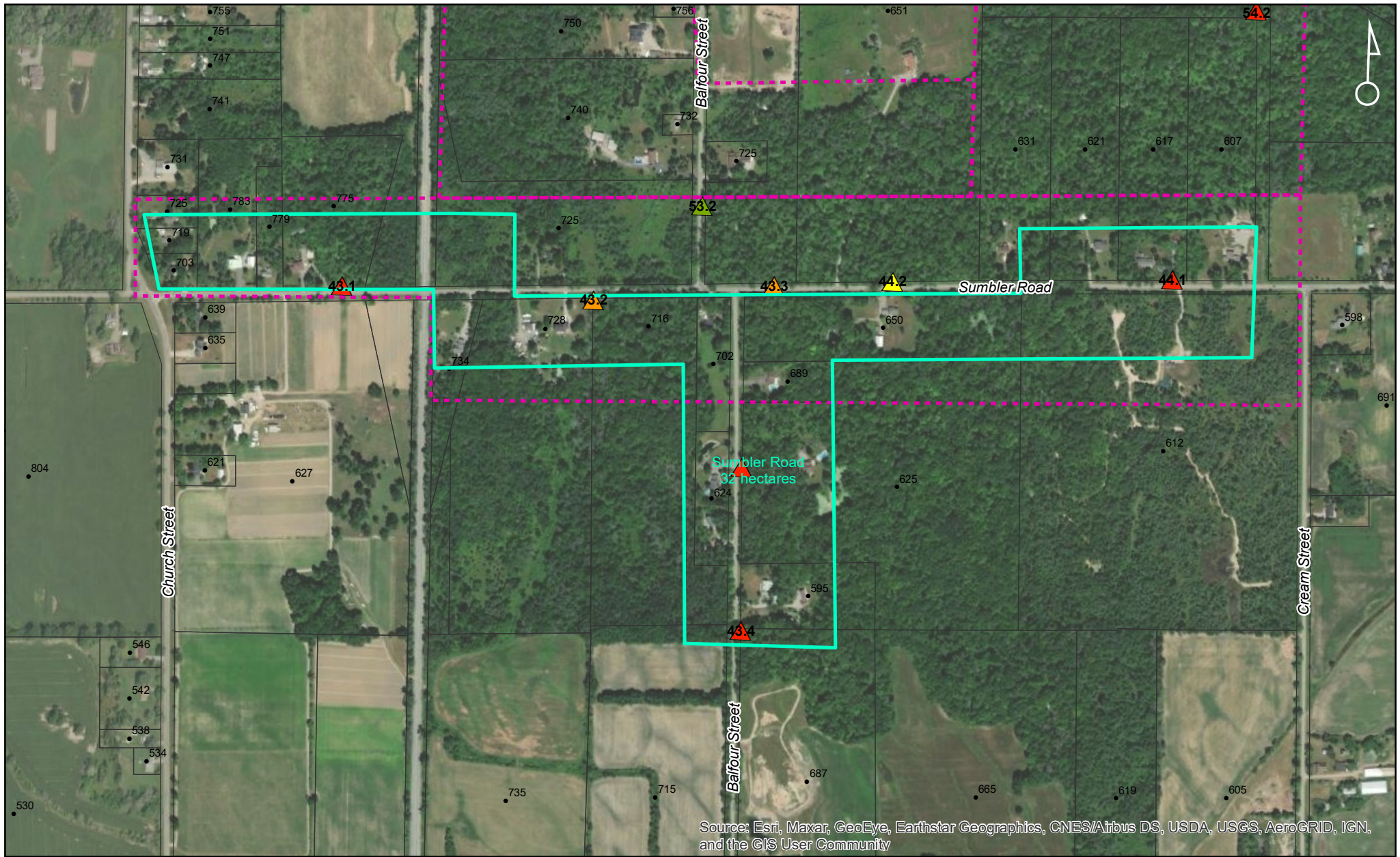
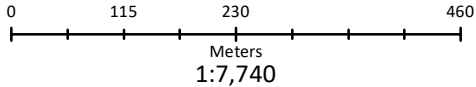


Sumbler Road



Source: Esri, Maxar, GeoEye, Earthstar Geographics, CNES/Airbus DS, USDA, USGS, AeroGRID, IGN, and the GIS User Community

Town of Pelham LDD Moth Aerial Spray Program



NAD 1983 UTM Zone 17N

Produced by Lallemand Inc./BioForest

2022 Defoliation Forecasts

Forest Plots (em/ha)

- ▲ Nil (0)
- ▲ Light (1-1250)
- ▲ Moderate (1251-3750)
- ▲ Heavy (3751-5000)
- ▲ Severe (5001+)

Street Plots (em/tree)

- Nil (0)
- Light (1-10)
- Moderate (11-40)
- Heavy (41-100)
- Severe (101+)

▭ PelhamSprayBlocks_Feb23

▭ PelhamSprayBlocks_Original

▭ AssessmentParcels