

Town of Pelham

Water and Wastewater

User Fees and Charges 2025



Overview

Water and wastewater user fees and charges are established to provide rate specific charges for residents utilizing water and wastewater services within the Town of Pelham.

Disclaimer

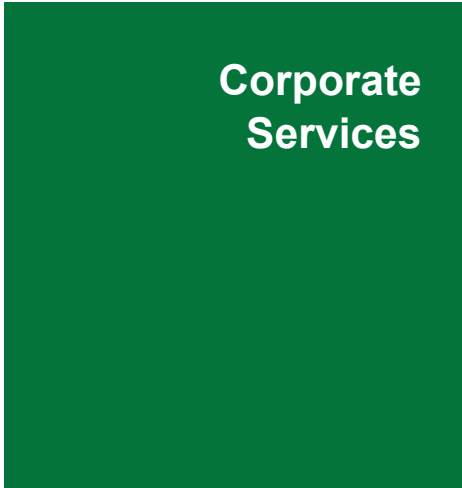
Where it is found that a fee in this schedule is different than an approved bylaw or policy, the latter shall prevail.

Contact

For further information about content found within this guide please contact the Town of Pelham.



2025	
Water Rates	
Metered Rates	
Bi-Monthly Base Charge (up to 19mm Meter)	\$37.02
Bi-Monthly Base Charge (25mm Meter)	\$74.02
Bi-Monthly Base Charge (37mm Meter)	\$103.64
Bi-Monthly Base Charge (50mm Meter)	\$148.02
Bi-Monthly Base Charge (75mm Meter)	\$370.10
Bi-Monthly Base Charge (100mm Meter)	\$617.03
Bi-Monthly Base Charge (150mm Meter)	\$1,233.72
Bi-Monthly Base Charge (200mm Meter)	\$1,974.48
Rate per cubic meter	\$2.142/m ³
Wastewater Rates	
Metered Rates	
Bi-Monthly Base Charge (up to 19mm Meter)	\$50.27
Bi-Monthly Base Charge (25mm Meter)	\$100.53
Bi-Monthly Base Charge (37mm Meter)	\$140.77
Bi-Monthly Base Charge (50mm Meter)	\$201.07
Bi-Monthly Base Charge (75mm Meter)	\$502.73
Bi-Monthly Base Charge (100mm Meter)	\$838.16
Bi-Monthly Base Charge (150mm Meter)	\$1,675.84
Bi-Monthly Base Charge (200mm Meter)	\$2,682.06
Rate per cubic meter	\$1.691 m ³



	2025
Water Loading Station Rates	
Per cubic meter	\$2.4692 m ³
Water for Construction Rates	
Residential Flat Rate (up to 3 months)	\$135.00
***After 3 Months the account is set up for billing	
Commercial Flat Rate (up to 3 months)	\$215.00
General Water Services Fees	
Administration Charge (account set up fee)	\$25.00
Interest on water arrears	1.25%
Water Certificate- Mailed	\$55.00
Water Certificate – Verbal	\$25.00
NSF Charges	\$35.00
Statement of Water Account	\$10.00
Administration Fee for Adding Arrears to Tax	\$30.00



Corporate Services

		2025
Water Meters		
On and Off Charges		
Monday to Friday – 7:00am to 3:30pm flat rate (excluding holidays)		\$70.00
Saturday + Monday to Friday – 3:30pm to 7:00am flat rate (excluding holidays)		Full Cost Recovery
Sunday & Holidays – 12:01am to midnight		Full Cost Recovery
Meter Testing		
5/8" meter at owner's expense		\$90.00
Water Meter and Remote		
Tapping Fees		\$200.00
Water Meter Equipment		Full Cost Recovery
Municipal Property Damage		Full Cost Recovery

**Inquiries related to this user fee and charges guide
and requests for alternate formats can be directed to:**

The Corporation of the Town of Pelham
Attention: Corporate Services Department
Town of Pelham, Municipal Building
P.O Box 400, 20 Pelham Town Square
Fonthill, Ontario
L0S 1E0
Email: water@pelham.ca