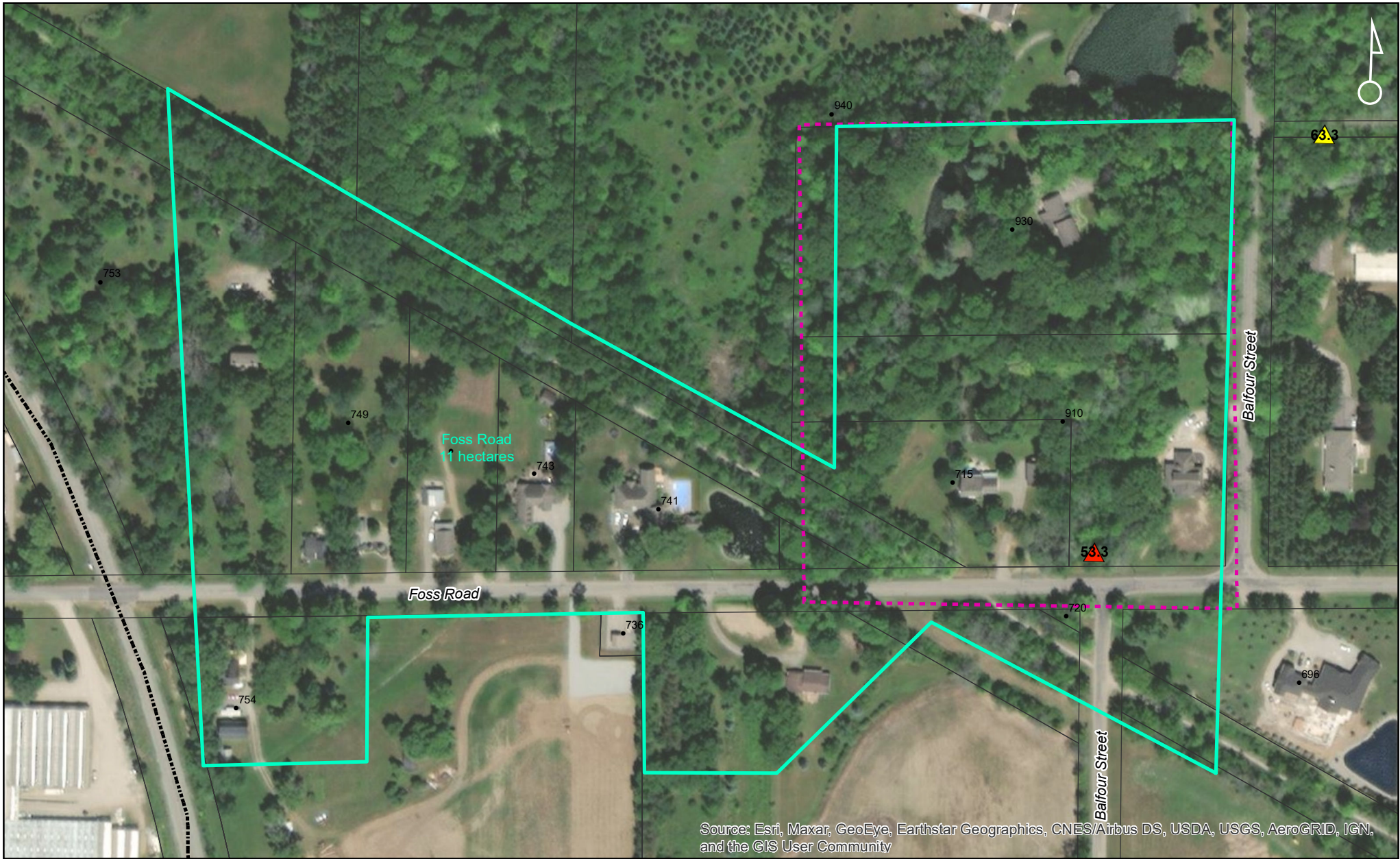


Foss Road



Source: Esri, Maxar, GeoEye, Earthstar Geographics, CNES/Airbus DS, USDA, USGS, AeroGRID, IGN, and the GIS User Community

<h2>Town of Pelham</h2> <h3>LDD Moth Aerial Spray Program</h3>		<h3>2022 Defoliation Forecasts</h3>	
		<h4>Forest Plots (em/ha)</h4> <ul style="list-style-type: none"> Nil (0) Light (1-1250) Moderate (1251-3750) Heavy (3751-5000) Severe (5001+) 	<h4>Street Plots (em/tree)</h4> <ul style="list-style-type: none"> Nil (0) Light (1-10) Moderate (11-40) Heavy (41-100) Severe (101+)
<p>NAD 1983 UTM Zone 17N Produced by Lallemand Inc./BioForest</p>		<ul style="list-style-type: none"> PelhamSprayBlocks_Feb23 PelhamSprayBlocks_Original AssessmentParcels 	